

Softick Card Export for Windows Mobile

User guide

Copyright © 2005-2009 Softick Ltd.

All rights reserved.

Table of contents

1.Introduction.....	3
2.Main features.....	3
3.System requirements.....	3
4.Installation.....	3
5.Settings.....	4
6.Application usage	7
7.Purchasing and registration.....	9
8.Problems and solutions.....	10
9.Technical support.....	11
10.Legal information.....	11

1. Introduction

Softick Card Export Windows Mobile is a tiny application which allows you to use Windows Mobile device as a convenient USB card reader. Now you can transfer files (music, for instance) from one desktop PC to another, or to the handheld storage card. For file transfer you need no additional software installed on your PC.

Softick Card Export for Windows Mobile provides a direct access to the card from the desktop computer, so you don't need to remove you card from the device and reinsert it into card reader. You won't realize at work that you left a card in home card reader! Now any application can save files directly to the card inserted into device, because Card Export for Windows Mobile provides fully compatible USB Mass Storage media for operating system, it can be accessed as removable drive.

2. Main features

- Card Export for Windows Mobile emulates industry standard **USB Mass Storage** device.
- Faster file transfer in comparison with ActiveSync, especially when there are many files.
- Maintenance of any card operations; performs card formatting and backup.

3. System requirements

Card Export for Windows Mobile requires:

- A handheld running Windows Mobile 2003, Windows Mobile 2003 SE or Windows Mobile 5 (6) based on Intel XScale PXA 25x, Intel XScale PXA 26x, Intel XScale PXA 27x, Texas Instruments OMAP Platform, Samsung S3C2410 and Samsung S3C2440 processors. Visit our page <http://softick.com/pocket-pc/cardexport2/#compatibility> for the list of compatible devices
- A desktop PC running Microsoft Windows 2000/XP/Vista, Windows 98/ME, Mac OS X 10.3 or later, Linux and FreeBSD.
- USB connection.

4. Installation

If there you have a previous version installed, deinstall it. If there is Windows Mobile 2003 installed, select "**Uninstall**" in Softick Card Export menu, and after the

Softick Card Export for Windows Mobile

<http://www.softick.com/pocket-pc/cardexport2>

rebooting enter **Settings-System-Remove Programs**, select "Softick Card Export" and tap "**Uninstall**". If you have Windows Mobile 5 or 6, enter **Settings-System-Remove Programs**, select "Softick Card Export" and tap "**Uninstall**". If there a localization was installed, deinstall language modules as well.

Now you can start installation. To begin with, make sure that **Owner Name** on your handheld is specified. If not, you won't be able to register your software copy later.

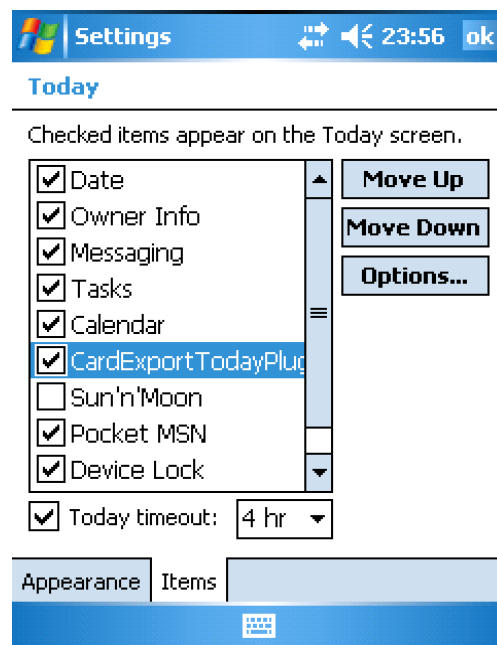
If Microsoft Windows and ActiveSync are installed on your desktop, download an installer in form of executable .EXE file. Launch this file and follow the instructions on the screen. If the handheld is connected to PC via any accessible interface, Softick Card Export for Windows Mobile will be installed at your handheld immediately. Otherwise, the installation will be complete during the next handheld synchronization with PC.

If you use Windows 98 OS, you have to install USB Mass Storage driver. This driver can be found in the Softick/CardExport/Windows98 folder on PC.

You can install Card Export using .cab package. Download .cab file applicable to your handheld OS version from our site. Save it somewhere on your PDA and launch. Than follow the instructions on the screen.

You have to install Card Export into built-in handheld memory.

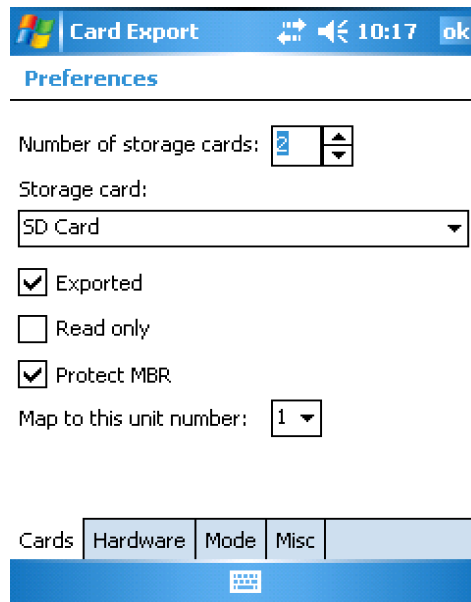
After installation is complete, the application will launch automatically, and the icon of Card Export will appear in lower tray of the handheld. Full-screen application is accessible from Start->Programs->Card Export for Windows Mobile. The plugin will be installed onto the Today screen. You can switch on/off and change its location using standard Windows Mobile means.



5. Settings

Enter application menu, choose **Preferences** (this menu is accessible only in Active sync Mode).

In the field **Number of storage card** set the total number of storage cards in the handheld. For some models this number includes built-in File Storage.



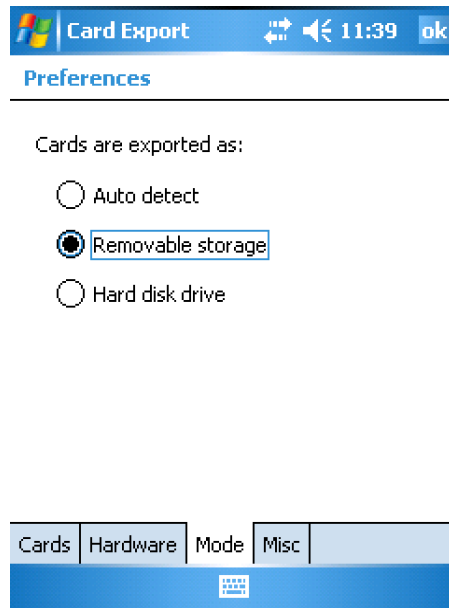
Choose the first storage card name from the drop-down list and set its parameters. Check **Exported** if you want the card to be displayed as device on PC. Checking **Read Only** will switch the card into the Read-only mode for PC. Checking **Protect MBR** will protect card system area and enhance card data safety. You can set order number for selected card in **Map to this unit number** to change cards order on the host PC. Repeat these settings for all the cards on your handheld.

Hardware page contains settings that control Softick Card Export for Windows Mobile compatibility with various PDA models. Change these parameters only under Support service advise, otherwise you can affect application workability.

Tab "**Mode**" allows to specify class of USB device

If you set the switch to "**Removable Storage**", the handheld will be connected using USB Removable Storage class.

It is the most reliable mode as to data safety. The change of memory card can be made correctly without entering ActiveSync mode or disconnecting USB cable. Though, there exist some restrictions, e.g. if a memory card is divided into two or more partitions, only one of them will be mounted on PC running Microsoft Windows. The means of card partitions control by desktop OS are also restricted.



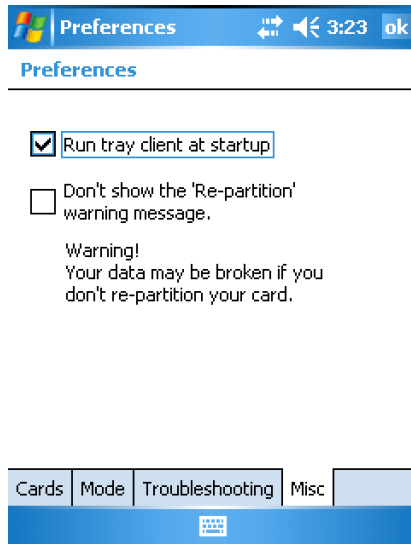
There are no such restrictions if handheld is connected as USB Fixed Disk device. Set the switch to "**Hard Disk Drive**". All the logical partitions will be mounted on PC, and all the means of card partitions control will be easy to access. Though, this mode is more potentially dangerous as for data loss, because desktop PC can use the different algorithm of data cache for a device with such class. That's why you must be sure to use "Safely remove hardware" tray icon or eject procedure on the desktop PC before switching Softick Card Export into Active Sync mode, or disconnecting USB cable when you need, for instance, to insert another card into the handheld or stop using exported storage. Mode switching is described in the Section 6.

If you need to use cards containing either one or several partitions and you don't want to switch device type manually, the best way is to use "**Auto detect**" mode. In this mode, Softick Card Export detects by itself the device class according to the number of card partitions. Using this option, you have to disconnect USB cable or switch to the ActiveSync mode before replacing memory card.

We recommend to use the "**Removable Storage**" device class, which is the most reliable in most cases. It is set by default during installation. Don't change it with no need.

On **Misc** page you can disable loading of application to the system tray. After disabling you will be able to launch Softick Card Export for Windows Mobile from **Programs**. The option "**Run tray client at startup**" will help you.

The purpose of "**Don't show the 'Re-partition' warning message**" option is described on the page 9.



6. Application usage

Regardless of variant you use (either tray client, full-screen or Today screen plugin), you can enjoy all the features of application. Softick Card Export for Windows Mobile allows switching USB port between ActiveSync and Card Export modes.



In the picture you see Softick Card Export for Windows Mobile in **ActiveSync** mode. In this mode the handheld operates with PC as if there no Softick Card Export for Windows Mobile is installed. All the ActiveSync options, such as synchronization and network access, are available.

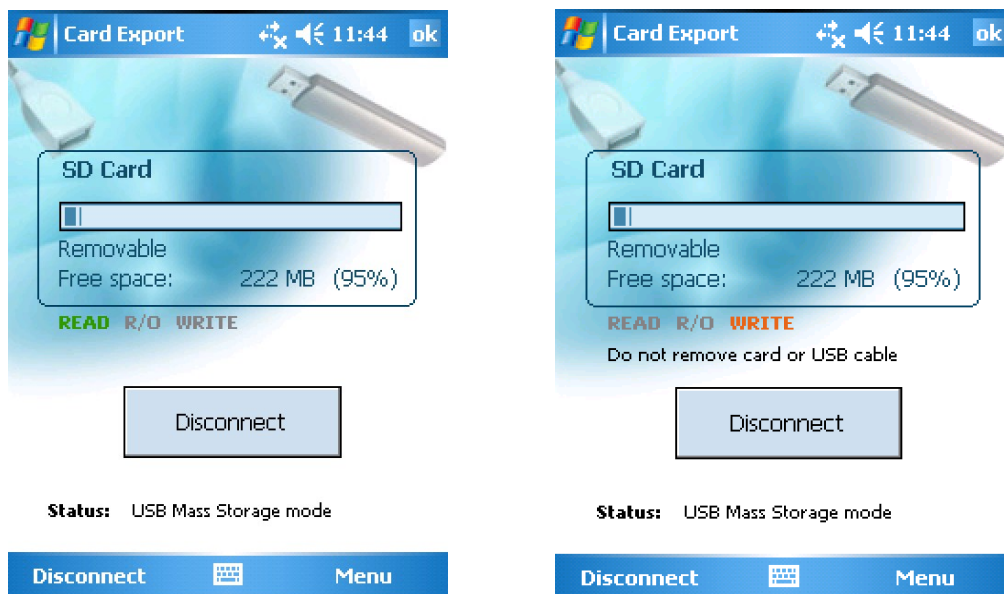
To mount storage cards as PC drives, tap **Connect** in a full-screen variant, choose **CardExport** in tray menu, or tap on the status icon of Today screen plugin. Connect the handheld and PC via cable, if it haven't been done earlier. In a few seconds removable drives with storage cards content will appear on the desktop.

In the **Card Export** mode the exported cards are blocked and are not accessible to handheld applications. No Windows Mobile application can get an access to exported cards.

The third mode is **Card Export Shared**. In this mode the access to memory card is blocked only for writing – for handheld applications as well as for desktop PC. To switch on this mode, choose **Card Export Shared** in tray menu, or tap the **Connect** button in full-screen application with the **Shared mode (read only)** option switched on. You can also use menu of Today screen plugin, which can be opened by long tap on the screen in the plugin area.

Irrespective of the mode, you can see a free memory space for memory cards. If there are several cards in your handheld, use arrow buttons to switch between them. Such switching doesn't influence the order and number of cards exported in CardExport mode.

Read and write operations are displayed by the special Read/Write status indicators and by changing appearance of the tray icon.



To return to the ActiveSync mode, choose an appropriate menu item from tray or tap **Disconnect** in a full-screen variant. You can also tap on the status icon of the Today screen plugin.

Note! In **CardExport** mode exported cards are locked in exclusive mode, that's why no Windows Mobile application can get an access to any cards while they

are exported to the desktop PC. You can't change settings in **Preferences** in **CardExport** mode as well.

7. Purchasing and registration

Softick Card Export for Windows Mobile is distributed on the try-before-you-buy basis. The application works as a full version within a period of 21 day. When this period is over, you have to buy the application or stop using it. You can buy it here: <http://www.softick.com/buy.php>

After you have purchased our product you will receive an unlock code. You have to enter this code in order to register Card Export. Do the following:

- Start Softick Card Export for Windows Mobile or tap the tray icon.
- Choose **Register**.
- The Registration form will appear.
- Enter the code you have received and tap **OK**.

You can register the application from the desktop using a special program. Make sure, that the handheld is connected to the desktop and stays in ActiveSync mode. Launch CERegUI.exe from a folder you've set on installation and follow the instructions on the screen.

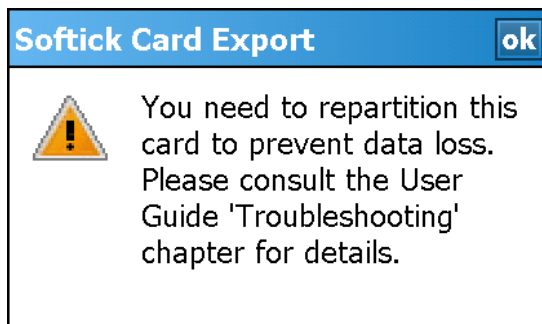
In case you get an Error message repeat code entering more carefully. If the problem remains, turn to our support service: <http://softick.com/suprequest/index.php>

Keep the unlock code you have received. If you've lost it, you can receive it again on <http://softick.com/support/serialrecover.php>

8. Problems and solutions

The built-in memory card driver of some devices can determine the card size incorrectly. Usually this problem concerns the large size cards. On such cards the access to the last 1024 card sectors is impossible.

That's why the diagnostics of such situation is build into Card Export. If the option **"Don't show the 'Repartition' warning message"** is switched on, you will see the following message if problem appear:



Please perform a card repartition:

- save the card data. It is better to use card reader;
- while the handheld card is inserted, configure Card Export for Hard Disk Removable mode (see section 5);
- plug a handheld to the desktop computer and set the application into Card export mode;
- desktop computer will see a new hard disk. Delete partitions from this new disk using desktop PC (be careful, do not confuse disks!);
- create partition(s) using all the unpartitioned space;
- format the newly-created partition.

9. Technical support

We provide technical support for customers, so you are welcomed to our web-page <http://softick.com/support.html>. You can contact us by e-mail: support@softick.com

Also you can visit our forum: <http://www.softick-forum.com/>

10. Legal information

All the above-mentioned names and trademarks are the properties of their respective owners.